



Certificate Applicant / Company



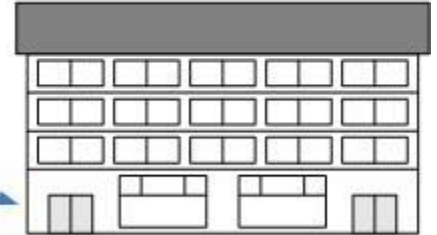
1

Submits complete Balance Sheet/Financials via email.



Digitally signs the Balance Sheet/Financial (PDF Format)

Digitally Signs email to ensure proof of origin



Lahore Stock Exchange

2

- Verifies validity and integrity of digital signature received from company

- After necessary verification a web-link is created by the exchange to make the document publicly available.



Upload Files

